



Steel Service Center
Tube & Profile

Serving the STEEL industry



YAMETAŞ YASSI METAL MAMULLERİ SAN. VE TİC. A.Ş.



// Contents

About Us 5

Steel Service Center

Slitted Coil 6

Sheet 8

Coil 10

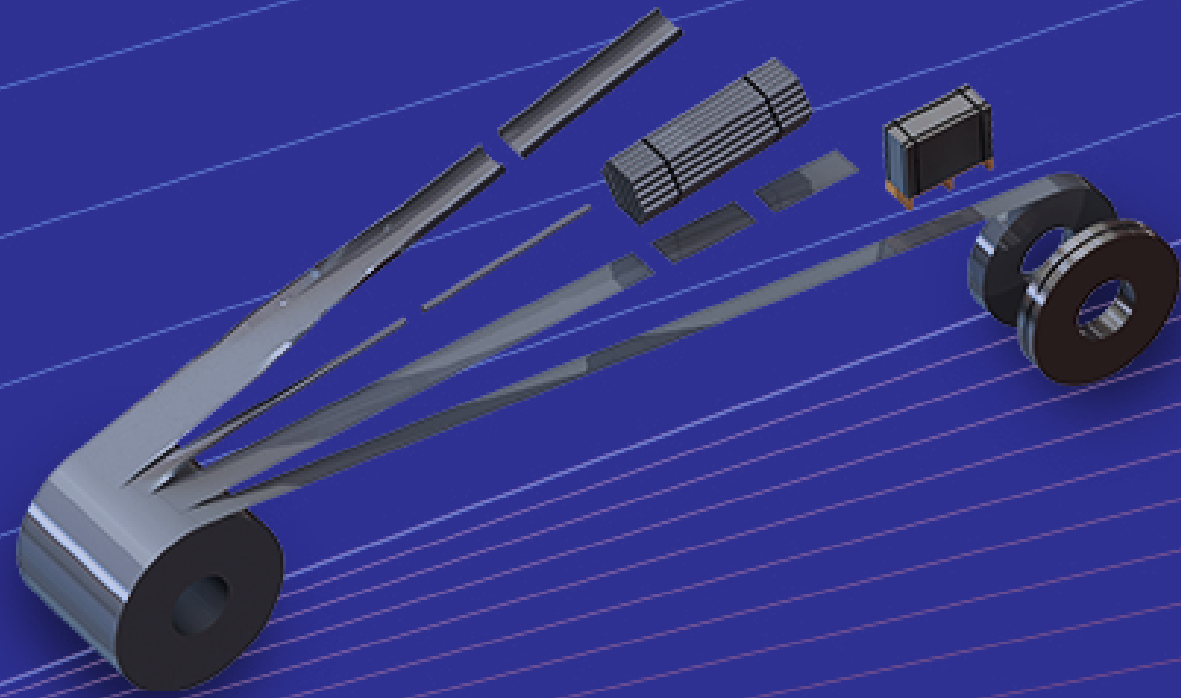
Tube and Profile

Tube 12

Hollow Section 14

Special Sections 16

Open Section Profile 18





About Us

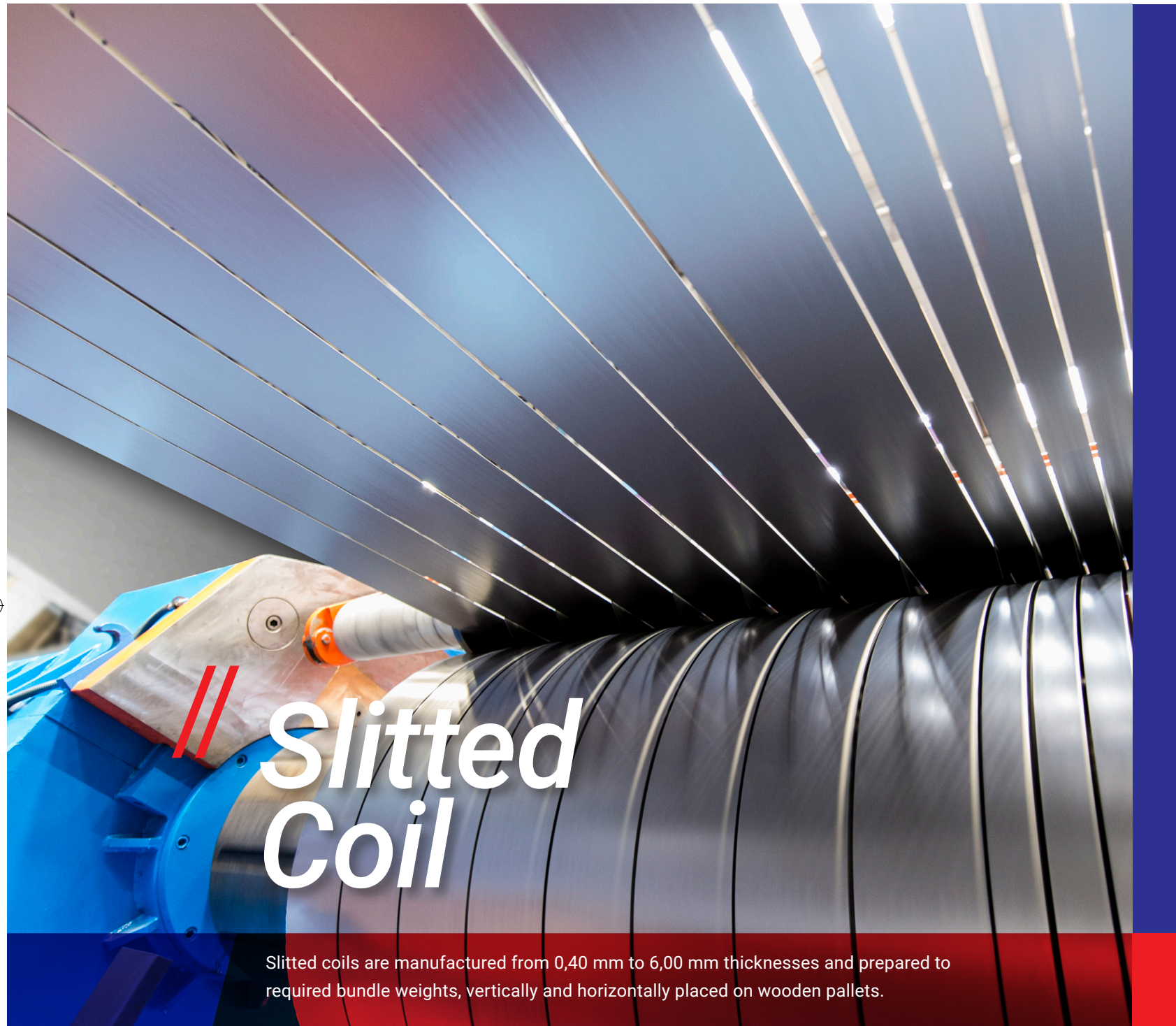
Yametaş, one of the leading companies in the Turkish steel industry, continues its activities with the principles of responsibility given by its experience of more than half a century.

Since it was established in 1966, Yametaş has consistently improved itself as a follower of all innovations and developments with its dynamism. Yametaş gives particular importance to sense of high quality and customer satisfaction in all contexts.

At its production facilities located on a land of 30.000 m², Yametaş has Steel Service Center and Tube & Profile & Roll-Forming lines which meet the needs of many sectors in both domestic and foreign markets.

Our biggest goal is to maintain a long term partnership with our precious customers through our experienced, customer-oriented and skilled staff for

"Serving the STEEL industry".



Slitted coils are manufactured from 0,40 mm to 6,00 mm thicknesses and prepared to required bundle weights, vertically and horizontally placed on wooden pallets.

Raw materials in
Manufacturing Process

- // Hot Rolled Coils
- // Pickled & Oiled Coils
- // Cold Rolled Coils
- // Galvanised Coils
- // Aluzinc Coils
- // Prepainted Coils

| Dimensions | Min. | Max. |
|----------------------|---------|----------|
| Thickness | 0,40 mm | 6,00 mm |
| Width | 11 mm | 1500 mm |
| Weight | 100 kg | 25000 kg |
| Coil Inside Diameter | 500 mm | |



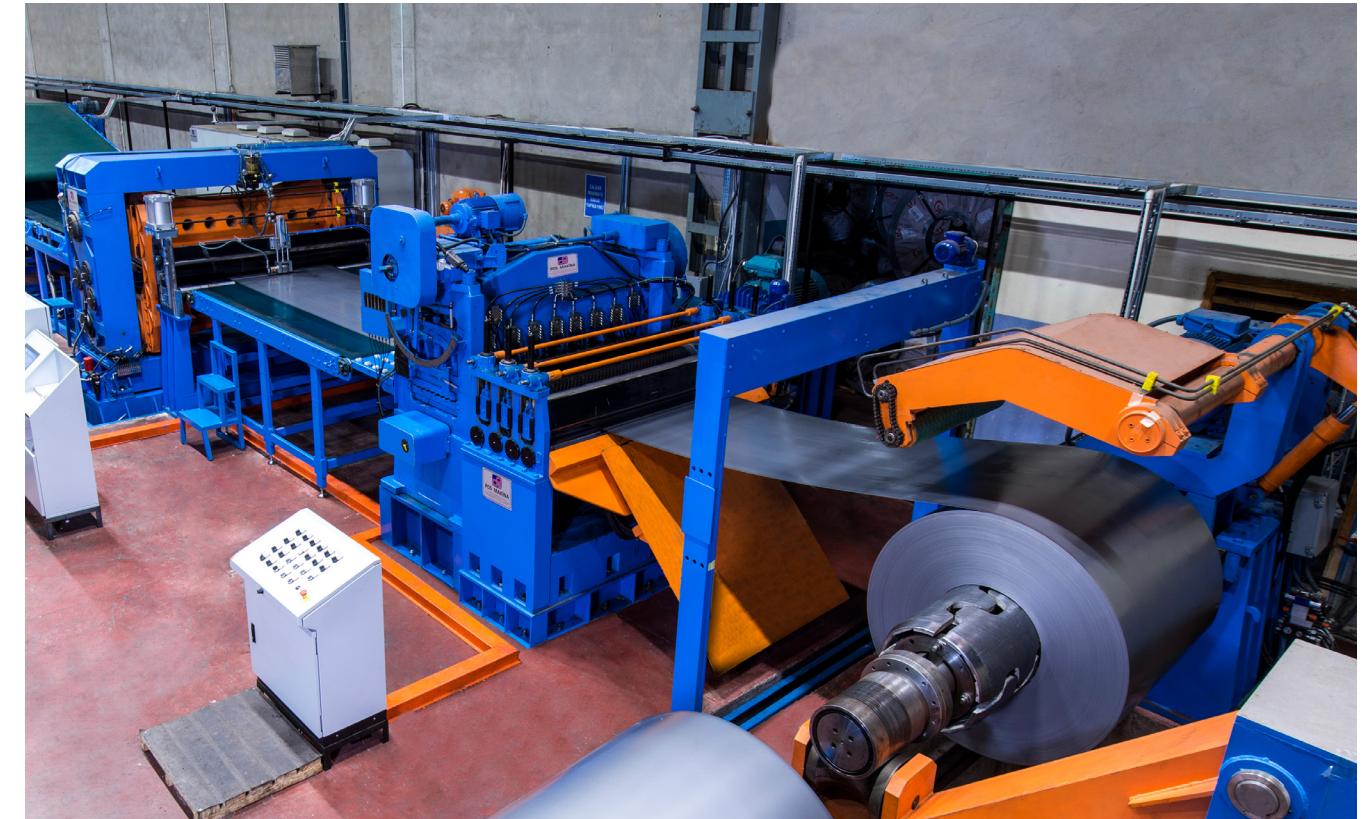
Sheet

Sheets in special or standart width are cut longitudinally after leveling and strapped with/without pallet, labeled and made ready for shipment.

Raw materials in Manufacturing Process

- // Hot Rolled Coils
- // Pickled & Oiled Coils
- // Cold Rolled Coils
- // Galvanised Coils
- // Aluzinc Coils
- // Prepainted Coils

| Dimensions | Min. | Max. |
|------------|---------|----------|
| Thickness | 0,40 mm | 10,00 mm |
| Width | 400 mm | 1500 mm |
| Length | 400 mm | 12000 mm |





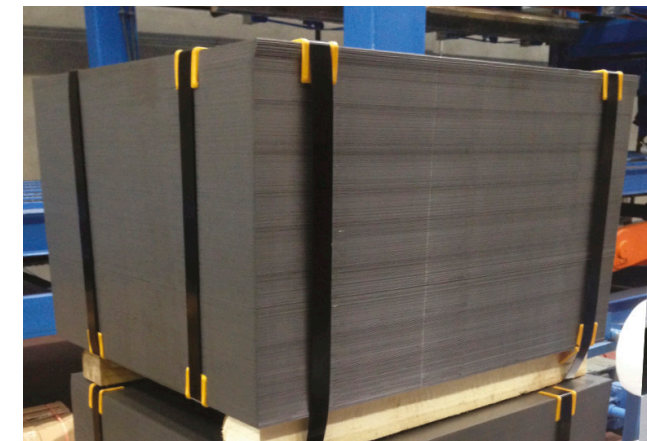
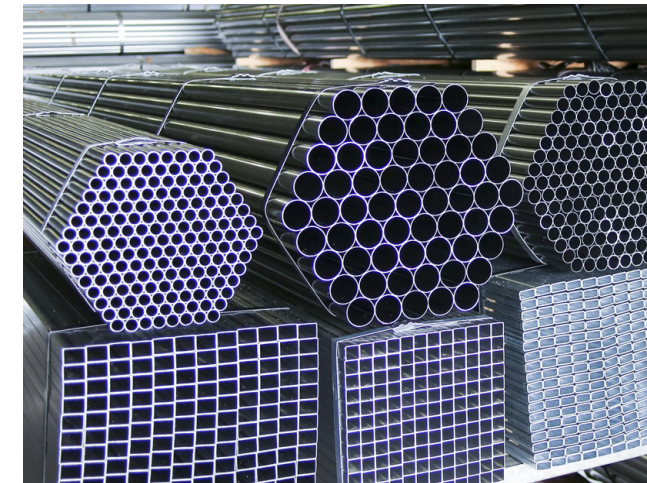
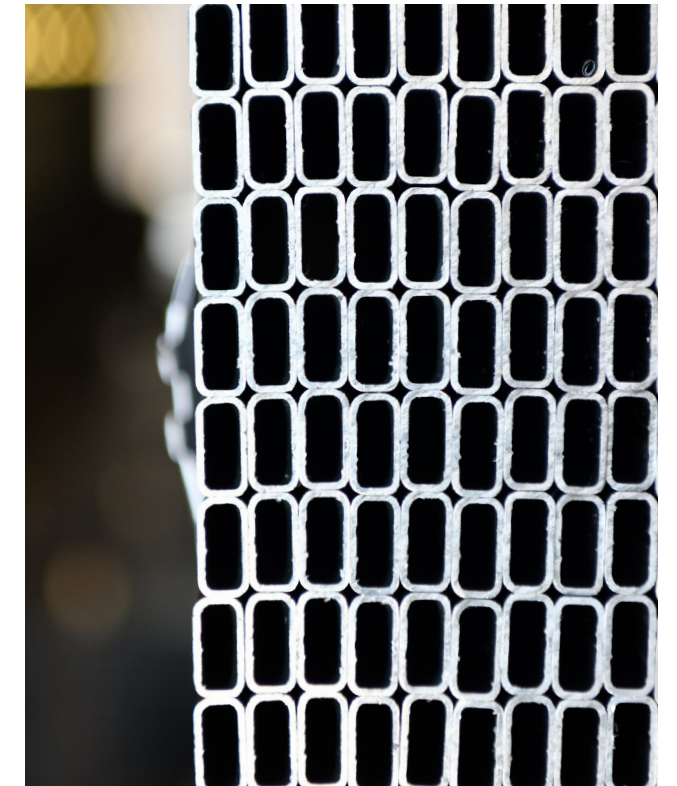
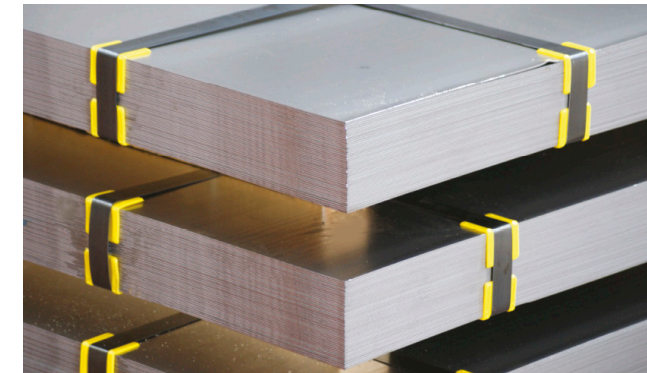
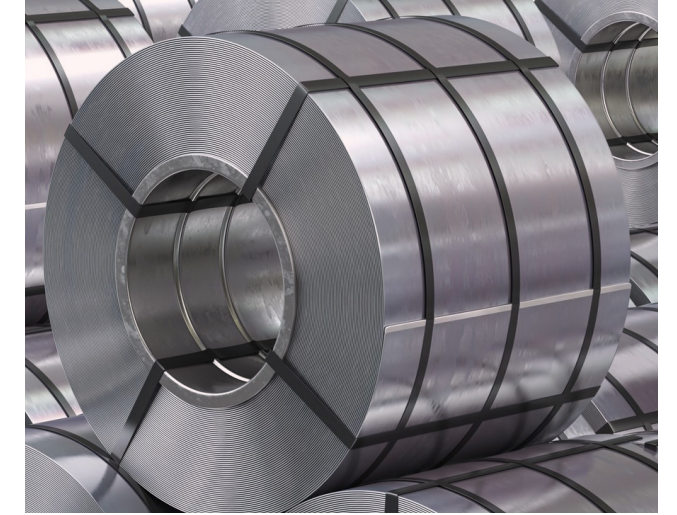
// Coil

Hot Rolled Coils, Pickled & Oiled Coils, Cold Rolled Coils
Galvanised Coils, Aluzinc Coils, Prepainted Coils

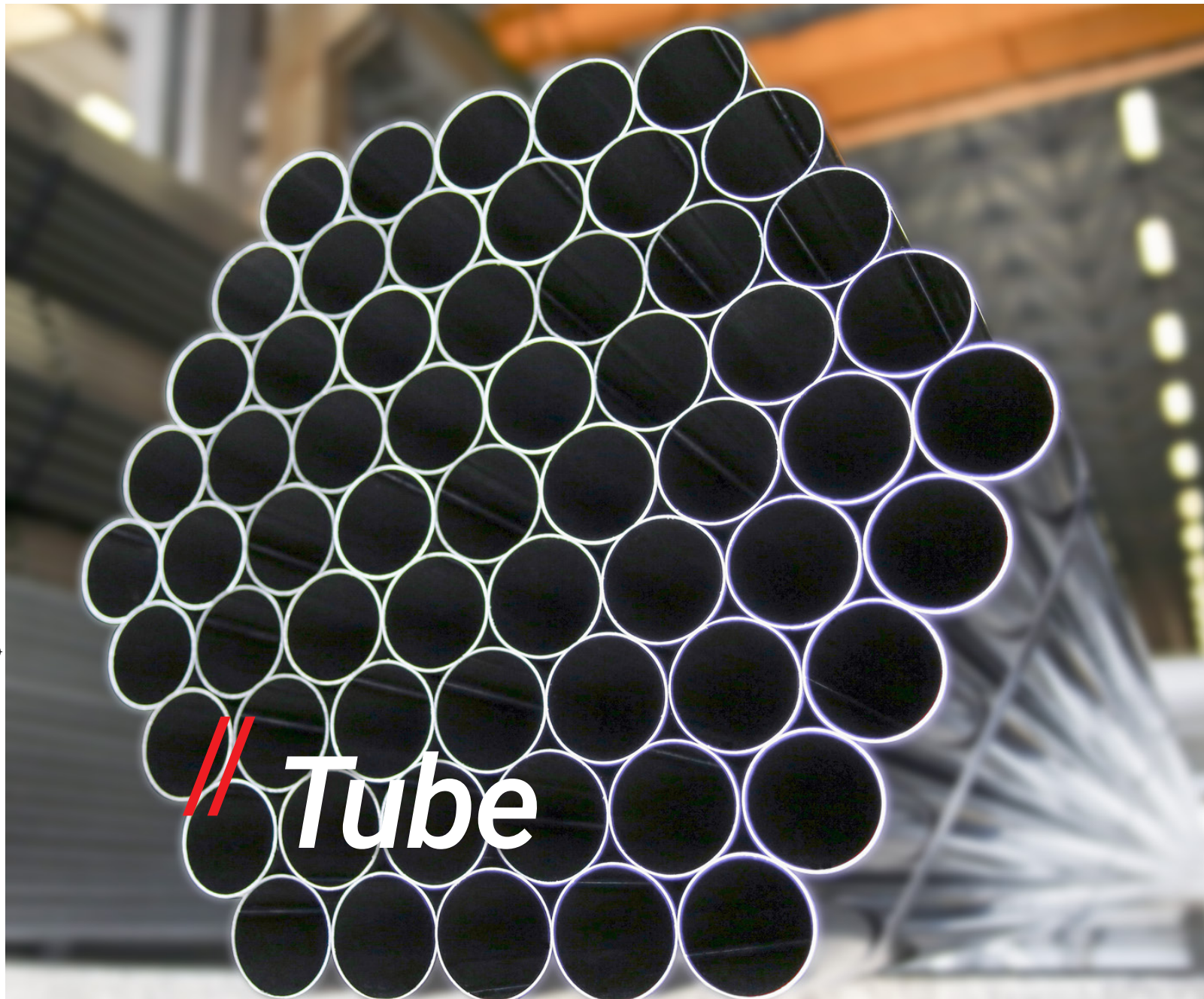
Raw materials in
Manufacturing Process;

- // Hot Rolled Coils
- // Pickled & Oiled Coils
- // Cold Rolled Coils
- // Galvanised Coils
- // Aluzinc Coils
- // Prepainted Coils

| Dimensions | Min. | Max. |
|------------|---------|----------|
| Thickness | 0,40 mm | 10,00 mm |
| Width | 1000 mm | 1500 mm |



Tube and Profile



Length: 6000mm, optional between 3000 mm - 9000 mm
Zinc spraying on welding area of galvanized tubes and hollow sections

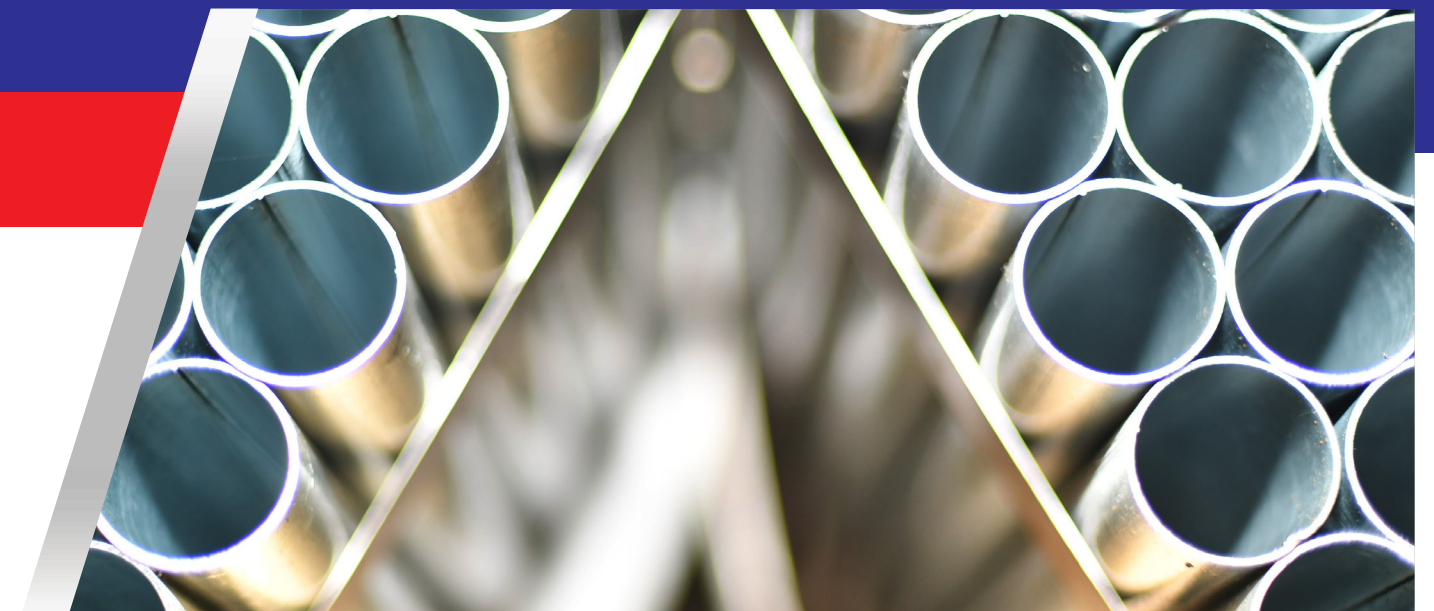
Raw materials in
Manufacturing Process;

- // Hot Rolled Coils
- // Pickled & Oiled Coils
- // Cold Rolled Coils
- // Galvanised Coils
- // Aluzinc Coils

| Dimensions | Min. | Max. |
|------------------|---------|---------|
| Outside Diameter | Ø10 mm | Ø76 mm |
| Thickness | 0,50 mm | 3,00 mm |
| Length | 3000 mm | 9000 mm |

| OUTSIDE DIAMETER | THICKNESS (mm) | | | | | | | | | | |
|---------------------|----------------|------|------|------|------|------|------|------|------|------|------|
| | 0,50 | 0,60 | 0,70 | 0,80 | 0,90 | 1,00 | 1,20 | 1,50 | 2,00 | 2,50 | 3,00 |
| Ø10 | | ◆ | ◆ | ◆ | ◆ | ◆ | | | | | |
| Ø12 | ◆ | ◆ | ◆ | ◆ | ◆ | ◆ | ◆ | | | | |
| Ø13 | ◆ | ◆ | ◆ | ◆ | ◆ | ◆ | ◆ | ◆ | | | |
| Ø14 | ◆ | ◆ | ◆ | ◆ | ◆ | ◆ | ◆ | ◆ | | | |
| Ø16 | ◆ | ◆ | ◆ | ◆ | ◆ | ◆ | ◆ | ◆ | | | |
| Ø18 | ◆ | ◆ | ◆ | ◆ | ◆ | ◆ | ◆ | ◆ | | | |
| Ø19 | ◆ | ◆ | ◆ | ◆ | ◆ | ◆ | ◆ | ◆ | | | |
| Ø20 | ◆ | ◆ | ◆ | ◆ | ◆ | ◆ | ◆ | ◆ | ◆ | | |
| Ø21 | ◆ | ◆ | ◆ | ◆ | ◆ | ◆ | ◆ | ◆ | ◆ | | |
| Ø22 | ◆ | ◆ | ◆ | ◆ | ◆ | ◆ | ◆ | ◆ | ◆ | | |
| Ø23,5 | ◆ | ◆ | ◆ | ◆ | ◆ | ◆ | ◆ | ◆ | ◆ | | |
| Ø25 | ◆ | ◆ | ◆ | ◆ | ◆ | ◆ | ◆ | ◆ | ◆ | ◆ | |
| Ø27 | ◆ | ◆ | ◆ | ◆ | ◆ | ◆ | ◆ | ◆ | ◆ | ◆ | |
| Ø28,6 | | ◆ | ◆ | ◆ | ◆ | ◆ | ◆ | ◆ | ◆ | ◆ | |
| Ø30 | | ◆ | ◆ | ◆ | ◆ | ◆ | ◆ | ◆ | ◆ | ◆ | ◆ |
| Ø32 | | ◆ | ◆ | ◆ | ◆ | ◆ | ◆ | ◆ | ◆ | ◆ | ◆ |
| Ø33,7 | | ◆ | ◆ | ◆ | ◆ | ◆ | ◆ | ◆ | ◆ | ◆ | ◆ |
| Ø36 | | ◆ | ◆ | ◆ | ◆ | ◆ | ◆ | ◆ | ◆ | ◆ | ◆ |
| Ø38 | | ◆ | ◆ | ◆ | ◆ | ◆ | ◆ | ◆ | ◆ | ◆ | ◆ |
| Ø42 | | ◆ | ◆ | ◆ | ◆ | ◆ | ◆ | ◆ | ◆ | ◆ | ◆ |
| Ø45 | | | ◆ | ◆ | ◆ | ◆ | ◆ | ◆ | ◆ | ◆ | ◆ |
| Ø48 | | | ◆ | ◆ | ◆ | ◆ | ◆ | ◆ | ◆ | ◆ | ◆ |
| Ø51 | | | ◆ | ◆ | ◆ | ◆ | ◆ | ◆ | ◆ | ◆ | ◆ |
| Ø54 | | | ◆ | ◆ | ◆ | ◆ | ◆ | ◆ | ◆ | ◆ | ◆ |
| Ø57 | | | | ◆ | ◆ | ◆ | ◆ | ◆ | ◆ | ◆ | ◆ |
| Ø60 | | | | | ◆ | ◆ | ◆ | ◆ | ◆ | ◆ | ◆ |
| Ø63 | | | | | ◆ | ◆ | ◆ | ◆ | ◆ | ◆ | ◆ |
| Ø76 | | | | | | | ◆ | ◆ | ◆ | ◆ | ◆ |

(DIN 2394, EN 10305-3, TS EN 10219)



Hollow Section

Length: 6.000mm, optional between 3.000 mm – 9.000 mm
Zinc spraying on welding area of galvanized tubes and hollow sections

Raw materials in
Manufacturing Process;

- // Hot Rolled Coils
- // Pickled & Oiled Coils
- // Cold Rolled Coils
- // Galvanised Coils
- // Aluzinc Coils

| Dimensions | Min. | Max. |
|------------|----------|--------------------|
| Dimension | 10x10 mm | 60x60 mm, 40x80 mm |
| Thickness | 0,50 mm | 3,00 mm |
| Length | 3000 mm | 9000 mm |

| DIMENSION | THICKNESS (mm) | | | | | | | | | | |
|-----------|----------------|------|------|------|------|------|------|------|------|------|------|
| | 0,50 | 0,60 | 0,70 | 0,80 | 0,90 | 1,00 | 1,20 | 1,50 | 2,00 | 2,50 | 3,00 |
| 10x10 | ◆ | ◆ | ◆ | ◆ | ◆ | ◆ | | | | | |
| 12x12 | ◆ | ◆ | ◆ | ◆ | ◆ | ◆ | ◆ | | | | |
| 12.7x12.7 | ◆ | ◆ | ◆ | ◆ | ◆ | ◆ | ◆ | | | | |
| 10x15 | ◆ | ◆ | ◆ | ◆ | ◆ | ◆ | ◆ | ◆ | | | |
| 15x15 | ◆ | ◆ | ◆ | ◆ | ◆ | ◆ | ◆ | ◆ | | | |
| 10x20 | ◆ | ◆ | ◆ | ◆ | ◆ | ◆ | ◆ | ◆ | | | |
| 16x16 | ◆ | ◆ | ◆ | ◆ | ◆ | ◆ | ◆ | ◆ | | | |
| 10x25 | ◆ | ◆ | ◆ | ◆ | ◆ | ◆ | ◆ | ◆ | | | |
| 15x20 | ◆ | ◆ | ◆ | ◆ | ◆ | ◆ | ◆ | ◆ | | | |
| 20x20 | ◆ | ◆ | ◆ | ◆ | ◆ | ◆ | ◆ | ◆ | | | |
| 15x25 | ◆ | ◆ | ◆ | ◆ | ◆ | ◆ | ◆ | ◆ | | | |
| 10x30 | ◆ | ◆ | ◆ | ◆ | ◆ | ◆ | ◆ | ◆ | | | |
| 15x30 | ◆ | ◆ | ◆ | ◆ | ◆ | ◆ | ◆ | ◆ | | | |
| 25x25 | ◆ | ◆ | ◆ | ◆ | ◆ | ◆ | ◆ | ◆ | | | |
| 10x40 | ◆ | ◆ | ◆ | ◆ | ◆ | ◆ | ◆ | ◆ | ◆ | | |
| 20x30 | ◆ | ◆ | ◆ | ◆ | ◆ | ◆ | ◆ | ◆ | ◆ | | |
| 30x30 | ◆ | ◆ | ◆ | ◆ | ◆ | ◆ | ◆ | ◆ | ◆ | ◆ | |
| 10x50 | ◆ | ◆ | ◆ | ◆ | ◆ | ◆ | ◆ | ◆ | ◆ | ◆ | |
| 20x40 | ◆ | ◆ | ◆ | ◆ | ◆ | ◆ | ◆ | ◆ | ◆ | ◆ | |
| 25x40 | | ◆ | ◆ | ◆ | ◆ | ◆ | ◆ | ◆ | ◆ | ◆ | |
| 35x35 | | ◆ | ◆ | ◆ | ◆ | ◆ | ◆ | ◆ | ◆ | ◆ | |
| 30x40 | | ◆ | ◆ | ◆ | ◆ | ◆ | ◆ | ◆ | ◆ | ◆ | |
| 10x60 | | ◆ | ◆ | ◆ | ◆ | ◆ | ◆ | ◆ | | | |
| 20x50 | | ◆ | ◆ | ◆ | ◆ | ◆ | ◆ | ◆ | ◆ | | |
| 25x50 | | ◆ | ◆ | ◆ | ◆ | ◆ | ◆ | ◆ | ◆ | ◆ | |
| 40x40 | | ◆ | ◆ | ◆ | ◆ | ◆ | ◆ | ◆ | ◆ | ◆ | ◆ |
| 20x60 | | ◆ | ◆ | ◆ | ◆ | ◆ | ◆ | ◆ | ◆ | ◆ | ◆ |
| 30x50 | | ◆ | ◆ | ◆ | ◆ | ◆ | ◆ | ◆ | ◆ | ◆ | ◆ |
| 45x45 | | ◆ | ◆ | ◆ | ◆ | ◆ | ◆ | ◆ | ◆ | ◆ | ◆ |
| 40x50 | | ◆ | ◆ | ◆ | ◆ | ◆ | ◆ | ◆ | ◆ | ◆ | ◆ |
| 30x60 | | ◆ | ◆ | ◆ | ◆ | ◆ | ◆ | ◆ | ◆ | ◆ | ◆ |
| 50x50 | | | | ◆ | ◆ | ◆ | ◆ | ◆ | ◆ | ◆ | ◆ |
| 30x70 | | | | ◆ | ◆ | ◆ | ◆ | ◆ | ◆ | ◆ | ◆ |
| 40x60 | | | | ◆ | ◆ | ◆ | ◆ | ◆ | ◆ | ◆ | ◆ |
| 60x60 | | | | | | | ◆ | ◆ | ◆ | ◆ | ◆ |
| 50x70 | | | | | | | ◆ | ◆ | ◆ | ◆ | ◆ |
| 40x80 | | | | | | | ◆ | ◆ | ◆ | ◆ | ◆ |

(DIN 2394, EN 10305-5, TS EN 10219)

Special Sections

Length: 6.000mm, optional between 3.000 mm – 9.000 mm
Zinc spraying on welding area of galvanized tubes and hollow sections

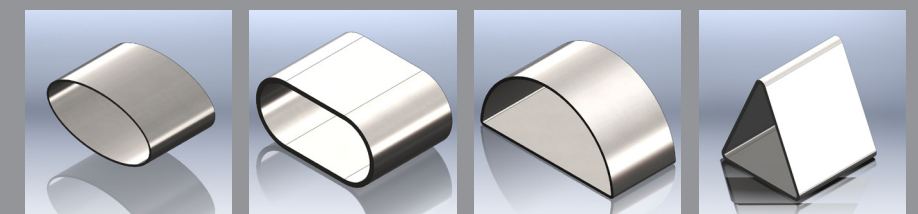
Raw materials in
Manufacturing Process;

- // Hot Rolled Coils
- // Pickled & Oiled Coils
- // Cold Rolled Coils
- // Galvanised Coils
- // Aluzinc Coils

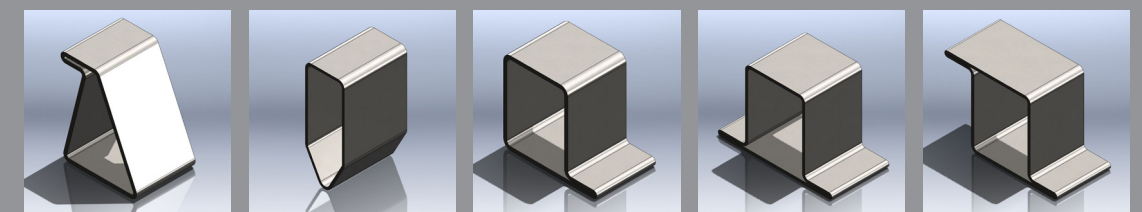
| Dimensions | Min. | Max. |
|------------|---------|---------|
| Thickness | 0,50 mm | 3,00 mm |
| Length | 3000 mm | 9000 mm |

| DIMENSION | PRODUCT NAME | THICKNESS (mm) | | | | | | | | | | |
|-----------|--------------|----------------|------|------|------|------|------|------|------|------|------|------|
| | | 0,50 | 0,60 | 0,70 | 0,80 | 0,90 | 1,00 | 1,20 | 1,50 | 2,00 | 2,50 | 3,00 |
| 14X28 | ELLIPSE | ✓ | ✓ | ✓ | ✓ | ✓ | ✓ | ✓ | ✓ | ✓ | | |
| 16X34 | ELLIPSE | ✓ | ✓ | ✓ | ✓ | ✓ | ✓ | ✓ | ✓ | ✓ | | |
| 17X32 | ELLIPSE | ✓ | ✓ | ✓ | ✓ | ✓ | ✓ | ✓ | ✓ | ✓ | | |
| 20X40 | ELLIPSE | | ✓ | ✓ | ✓ | ✓ | ✓ | ✓ | ✓ | ✓ | | |
| 20X41.2 | ELLIPSE | | ✓ | ✓ | ✓ | ✓ | ✓ | ✓ | ✓ | ✓ | | |
| 10X20 | OVAL | ✓ | ✓ | ✓ | ✓ | ✓ | ✓ | ✓ | ✓ | ✓ | | |
| 12.2X18.5 | OVAL | ✓ | ✓ | ✓ | ✓ | ✓ | ✓ | ✓ | ✓ | ✓ | | |
| 15X30 | OVAL | ✓ | ✓ | ✓ | ✓ | ✓ | ✓ | ✓ | ✓ | ✓ | | |
| 16X40 | OVAL | | ✓ | ✓ | ✓ | ✓ | ✓ | ✓ | ✓ | ✓ | | |
| 20X35 | OVAL | | ✓ | ✓ | ✓ | ✓ | ✓ | ✓ | ✓ | ✓ | | |
| 20X40 | OVAL | | ✓ | ✓ | ✓ | ✓ | ✓ | ✓ | ✓ | ✓ | | |
| 10X60 | OVAL | | | ✓ | ✓ | ✓ | ✓ | ✓ | ✓ | ✓ | | |
| 20X30 | OVAL | | ✓ | ✓ | ✓ | ✓ | ✓ | ✓ | ✓ | ✓ | | |
| 20X50 | OVAL | | | ✓ | ✓ | ✓ | ✓ | ✓ | ✓ | ✓ | | |
| 20X60 | OVAL | | ✓ | ✓ | ✓ | ✓ | ✓ | ✓ | ✓ | ✓ | | |
| 25X50 | OVAL | | | ✓ | ✓ | ✓ | ✓ | ✓ | ✓ | ✓ | ✓ | ✓ |
| 32X50 | OVAL | | | ✓ | ✓ | ✓ | ✓ | ✓ | ✓ | ✓ | ✓ | ✓ |
| 35X80 | OVAL | | | | | ✓ | ✓ | ✓ | ✓ | ✓ | ✓ | ✓ |
| 20X30 | D PROFILE | | ✓ | ✓ | ✓ | ✓ | ✓ | ✓ | ✓ | ✓ | | |
| 20X40 | D PROFILE | | ✓ | ✓ | ✓ | ✓ | ✓ | ✓ | ✓ | ✓ | | |
| 32.5X40 | TRIANGLE | | | | ✓ | ✓ | ✓ | ✓ | ✓ | | | |
| 50X50 | TRIGON | | | | ✓ | ✓ | ✓ | ✓ | ✓ | | | |
| 25X62.5 | PENTAGON | | | | ✓ | ✓ | ✓ | ✓ | ✓ | | | |
| 22X28 | L | | ✓ | ✓ | ✓ | ✓ | ✓ | ✓ | ✓ | ✓ | | |
| 22X28 | Z | | | ✓ | ✓ | ✓ | ✓ | ✓ | ✓ | ✓ | | |
| 22X28 | T | | | ✓ | ✓ | ✓ | ✓ | ✓ | ✓ | ✓ | | |
| 25X38 | L | | | ✓ | ✓ | ✓ | ✓ | ✓ | ✓ | ✓ | | |
| 25X38 | Z | | | ✓ | ✓ | ✓ | ✓ | ✓ | ✓ | ✓ | | |
| 25X38 | T | | | ✓ | ✓ | ✓ | ✓ | ✓ | ✓ | ✓ | | |

(DIN 2394, EN 10305-3/5, TS EN 10219)



ELLIPSE OVAL D PROFILE TRIANGLE



TRIGON PENTAGON L PROFILE T PROFILE Z PROFILE

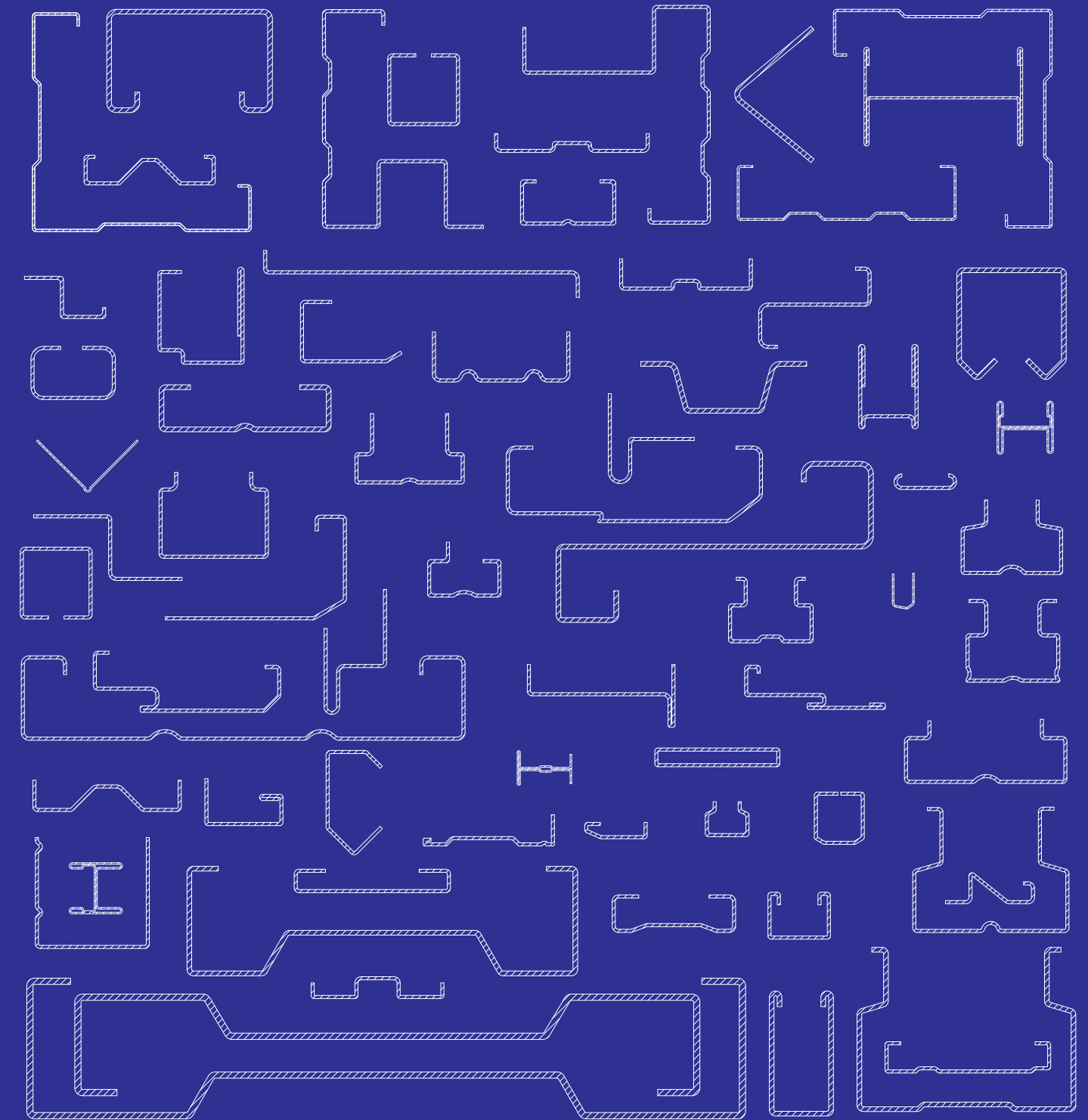
Open Section Profile

Specially shaped and perforated profiles are designed and produced in accordance with customer needs. Light steel structure warehouse and shed profiles, container profiles, shelf profiles, solar energy systems construction profiles, greenhouse construction profiles, special section profiles.

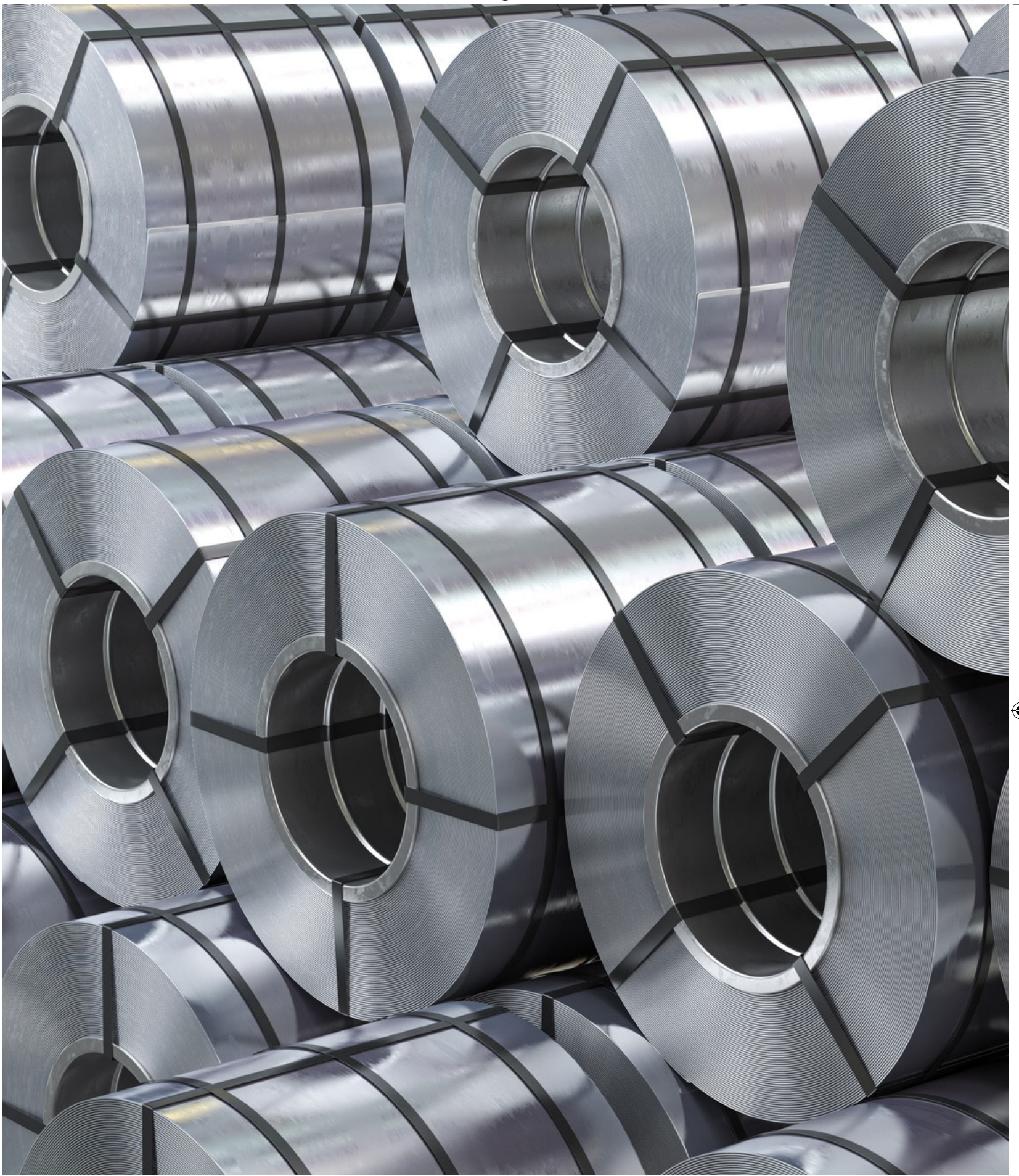
Raw materials in Manufacturing Process;

- // Hot Rolled Coils
- // Pickled & Oiled Coils
- // Cold Rolled Coils
- // Galvanised Coils
- // Aluzinc Coils
- // Prepainted Coils

| | Min. | Max. |
|-----------|---------|---------|
| Thickness | 0,50 mm | 8,00 mm |



Made of hot rolled, cold rolled and galvanized steel in desired length and form with precise holes on demand.
Up to %50 more economical, compared to regular NPI and NPU profiles with similar resistance values.



 **YAMETAŞ YASSI METAL MAMULLERİ SAN. VE TİC. A.Ş.**

İstanbul Anadolu Yakası Organize Sanayi Bölgesi
Aydınlı Mah. Gazi Bulvarı No:4
34953 Tuzla / İstanbul - Turkey

Phone : +90 216 593 06 80 (Pbx)
E-mail : info@yametas.com.tr
Web : www.yametas.com.tr

